

ABOUT US

The **Europarques-EBI International Biological Station** was established in 2002 with the support of the ICNF of Portugal together with three European universities. In 2006 the Foreign Ministers of Spain and Portugal officially ratified it.



International Biological Station Duero Douro

VALUE US IN:



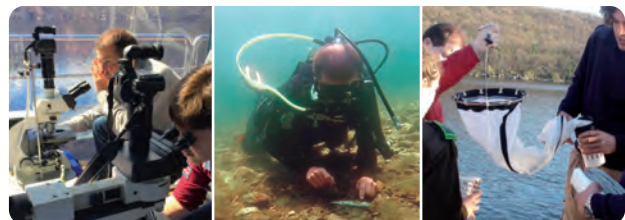
Crucero Ambiental Arribes



Crucero Ambiental Sanabria

All EBI **research and conservation of habitats and species projects** are financed through the ecotourism ticket on board of its Environmental Cruises. Its **sustainability model**, received in 2008 the First National Tourism Award and in 2009 the Medal of Merit of the Congress, in Portugal. You can follow our history, research projects, mission and values at

www.duerodouro.org



OUR CRUISES



TRANSBOUNDARY PACK
DOURO + SANABRIA



BEHAVIOUR CODE: The indications of the guides are obligatory observance and include the respectful and silent behaviour of visitors.



Quality ecotourism within reach of groups, events, schools and individuals. The **environmental education** in charge of the scientists and divers of the crew is complemented with equipment and research projects, together with the ethnographic resources, history and legends of these spectacular landscapes. Our ships are equipped with the latest hybrid-electric **navigation technologies**, heated panoramic deck, on-board laboratory and large terraces.



To learn more about the two main ecosystems of the Reserve, the EBI recommends buying the **Transboundary-Pack for the two Cruises** (Douro+Sanabria).

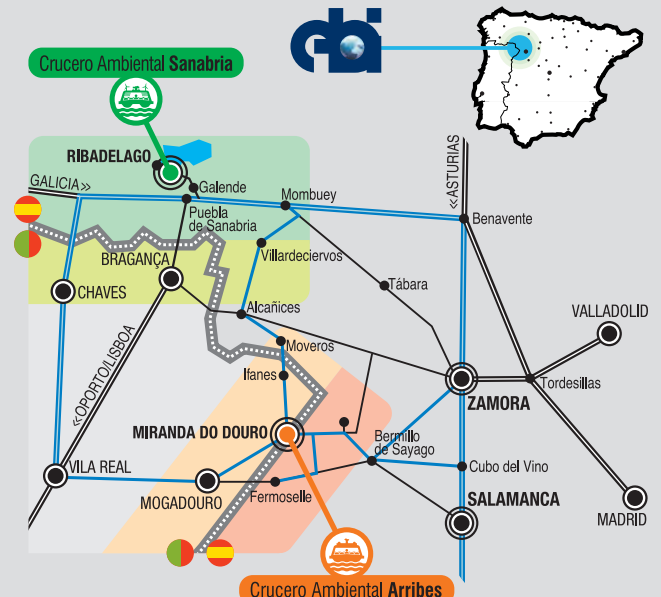
OUR EXPERIENCES



In addition to the activities included in the cruise, the EBI offers experiences and **unique events tailored**.



WHERE WE ARE



The **UNESCO Transboundary Reserve "MESETA IBÉRICA"** is formed by 4 natural parks -**Sanabria Lake**, **Montesinho**, **International Douro** and **Arribes del Duero**, which make up one of the largest ecological reserves in Western Europe. An **ecotourism paradise**, full of landscape, monumental, gastronomic and ethnographic resources. Besides the **Cruises**, you can visit the **Iberian Wolf Center** and several **Interpretation Centers**.

FURTHER INFORMATION



+34 980 557 557

+351 273 432 396



TICKETS & BOARDING

CRUCERO AMBIENTAL ARRIBES
EBI Nautical Park, Border of Zamora (ES)
with Miranda do Douro (PT)

CRUCERO AMBIENTAL SANABRIA
Custa Lago Beach, 1 km before
Ribadelago (Zamora - ES)



TICKETS ON-LINE



www.europarques.com

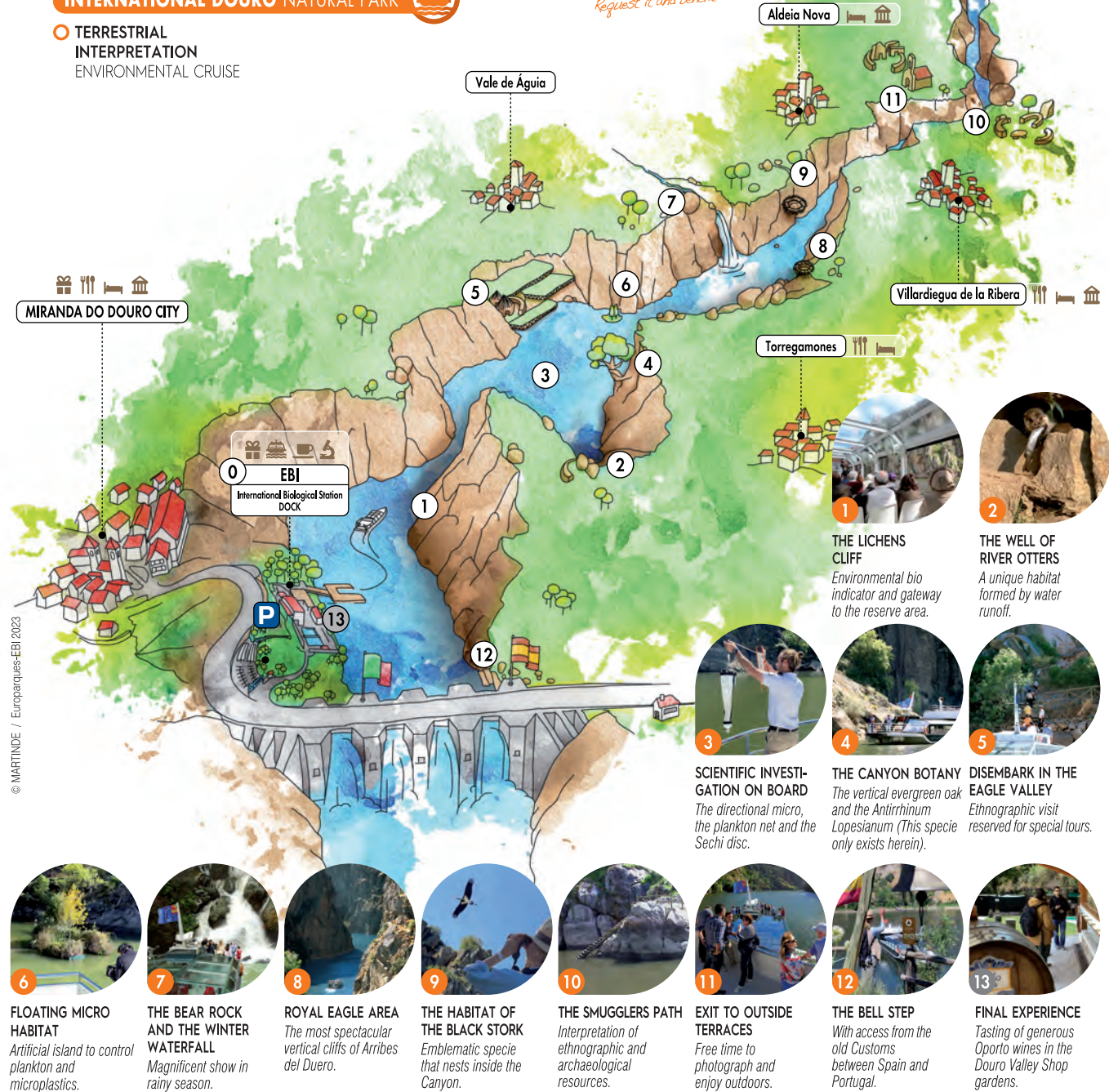


INTERNATIONAL DOURO NATURAL PARK

○ TERRESTRIAL
INTERPRETATION
ENVIRONMENTAL CRUISE



Request it and benefit



FAUNA AND FLORA

- | | |
|---|--|
| 1 VULTURE
<i>Gyps fulvus</i>
○ ● | 2 BLACK STORK
<i>Ciconia nigra</i>
○ |
| 3 EGYPTIAN VULTURE
<i>Neophron percnopterus</i>
○ | 4 GOLDEN EAGLE
<i>Aquila chrysaetos</i>
○ ● |
| 5 BONELLI'S EAGLE
<i>Aquila fasciata</i>
○ | 6 BLACK KITE
<i>Milvus migrans</i>
○ ● |
| 7 KESTREL
<i>Falco tinnunculus</i>
○ ● | 8 ALPINE SWIFT
<i>Tachymarptis melba</i>
○ ● |
| 9 GREAT CORMORAN
<i>Phalacrocorax carbo</i>
○ ● | 10 MALLARD
<i>Anas platyrhynchos</i>
○ ● |
| 11 GREAT CRESTED GREBE
<i>Podiceps cristatus</i>
○ | 12 EUROPEAN OTTER
<i>Lutra lutra</i>
○ ● |
| 13 COMMON BARBEL
<i>Luciobarbus bocagei</i>
○ ● | 14 EUROPEAN EEL
<i>Anguilla anguilla</i>
○ |
| 15 BROWN TROUT
<i>Salmo trutta</i>
○ ● | 16 NORTHERN STRAIGHT-MOUTH NASE
<i>Pseudochondrostoma duriense</i>
○ ● |
| 17 EVERGREEN OAK
<i>Quercus ilex</i>
○ ● | 18 NARROW-LEAFED ASH
<i>Fraxinus angustifolia</i>
○ ● |
| 19 JUNIPER TREE
<i>Juniperus communis</i>
<i>Juniperus oxycedrus</i>
○ | 20 PYRENEAN OAK
<i>Quercus pyrenaica</i>
○ |
| 21 EUCYCLOPS
<i>Eucyclops</i>
○ ● | 22 DAPHNIA
<i>Daphnia longispina</i>
○ ● |
| 23 BOSMINA
<i>Bosmina longirostris</i>
○ ● | 24 HOLOPEDIDIUM
<i>Holopedium gibberum</i>
○ |

○ DOURO ● SANABRIA

! Wildlife sightings depend largely on luck

SANABRIA LAKE NATURAL PARK

○ UNDERWATER INTERPRETATION
ENVIRONMENTAL CRUISE



Request it and benefit



FIRST EOLIC-SOLAR
CATAMARAN OF THE WORLD
0 decibels of noise, 0 waste, 0
effluents and 0 CO2 emissions